

Chapter 1

Measurement of Charge-to-Mass (e/m) Ratio for the Electron

Experiment objectives: measure the ratio of the electron charge-to-mass ratio e/m by studying the electron trajectories in a uniform magnetic field.

History

J.J. Thomson first measured the charge-to-mass ratio of the fundamental particle of charge in a cathode ray tube in 1897. A cathode ray tube basically consists of two metallic plates in a glass tube which has been evacuated and filled with a very small amount of background gas. One plate is heated (by passing a current through it) and “particles” boil off of the cathode and accelerate towards the other plate which is held at a positive potential. The gas in between the plates inelastically scatters the electrons, emitting light which shows the path of the particles. The charge-to-mass (e/m) ratio of the particles can be measured by observing their motion in an applied magnetic field. Thomson repeated his measurement of e/m many times with different metals for cathodes and also different gases. Having reached the same value for e/m every time, it was concluded that a fundamental particle having a negative charge e and a mass 2000 times less than the lightest atom existed in all atoms. Thomson named these particles “corpuscles” but we now know them as electrons. In this lab you will essentially repeat Thomson’s experiment and measure e/m for electrons.

Theory

The apparatus shown in Figure 1.1 consists of a glass tube that houses a small electron gun. This gun has a cathode filament from which electrons can be thermionically released (boiled off), and a nearby anode which can be set to a potential which is positive relative to the cathode. Electrons boiled off the cathode are accelerated to the anode, where most are collected. The anode contains a slit, however, which lets a fraction of the electrons into

the larger volume of the glass tube. Some of these electrons scatter inelastically with the background gas, thereby emitting tracer light to define the path of the electrons.

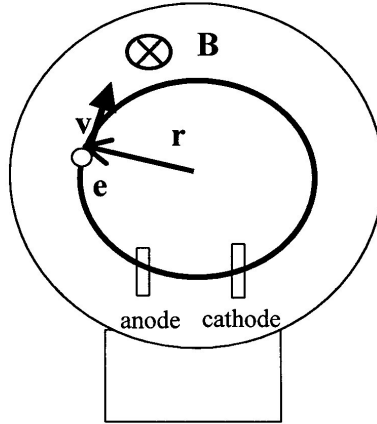


Figure 1.1: The schematic for the e/m apparatus.

To establish the uniform magnetic field a pair of circular Helmholtz coils are wound and the tube centered in the volume of the coils (see Appendix). The tube is oriented so that the beam which exits the electron gun is traveling perpendicular to the Helmholtz field. *We would like the field to be uniform, i.e., the same, over the orbit of the deflected electrons to the level of 1% if possible.*

An electron released thermionically at the cathode has on the order of 1 eV of kinetic energy. This electron “falls” through the positive anode potential V_a , gaining a kinetic energy of:

$$\frac{1}{2}mv^2 = eV_a \quad (1.1)$$

The magnetic field of the Helmholtz coils is perpendicular to this velocity, and produces a magnetic force which is transverse to both \mathbf{v} and \mathbf{B} : $\mathbf{F} = e\mathbf{v} \times \mathbf{B}$. This centripetal force makes an electron move along the circular trajectory; the radius of this trajectory r can be found from Newton’s Second Law:

$$m \left(\frac{v^2}{r} \right) = evB \quad (1.2)$$

From this equation we obtain the expression for the charge-to-mass ratio of the electron, expressed through the experimental parameters:

$$\frac{e}{m} = \frac{v}{rB} \quad (1.3)$$

We shall calculate magnetic field B using the Biot-Savart law for the two current loops of the Helmholtz coils (see Appendix):

$$B = \frac{8}{\sqrt{125}} \frac{\mu_0 N I_{hc}}{a}. \quad (1.4)$$

Here N is the number of turns of wire that form each loop, I_{hc} is the current (which is the same in both loops), a is the radius of the loops (in meters), and the magnetic permeability constant is $\mu_0 = 4\pi \cdot 10^{-7} \text{ T m/A}$.

Noting from Eq.(1.1) that the velocity is determined by the potential V_a as $v = \sqrt{2eV_a/m}$, and using Eq.(1.4) for the magnetic field B , we get:

$$\frac{e}{m} = 2 \frac{V_a}{r^2} \frac{1}{B^2} = 2 \frac{V_a}{r^2} \left[\frac{125}{64} \left(\frac{a}{\mu_0 N I_{hc}} \right)^2 \right] \quad (1.5)$$

The accepted value for the charge-to-mass ratio of the electron is $e/m = 1.7588196 \cdot 10^{11} \text{ C/kg}$.

Experimental Procedure

Equipment needed: Pasco e/m apparatus (SE-9638), Pasco High Voltage Power supply (for the accelerating voltage and the filament heater), GW power supply (for the Helmholtz coils), two digital multimeters.

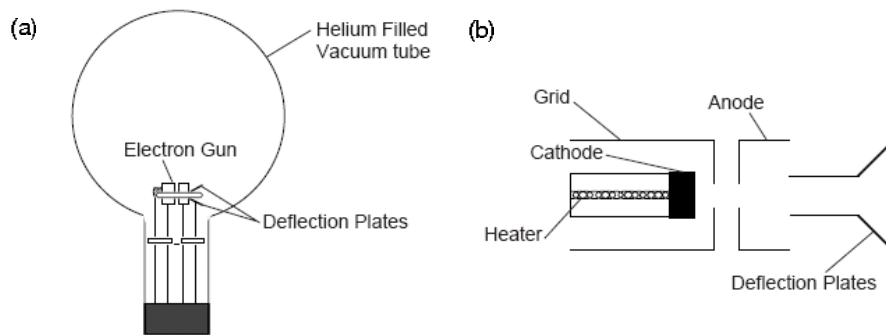


Figure 1.2: (a) e/m tube; (b) electron gun.

Pasco SE-9638 Unit:

The e/m tube (see Fig. 1.2a) is filled with helium at a pressure of 10^{-2} mm Hg, and contains an electron gun and deflection plates. The electron beam leaves a visible trail in the tube, because some of the electrons collide with helium atoms, which are excited and then radiate visible light. The electron gun is shown in Fig. 1.2b. The heater heats the cathode, which emits electrons. The electrons are accelerated by a potential applied between the cathode and the anode. The grid is held positive with respect to the cathode and negative with respect to the anode. It helps to focus the electron beam.

The Helmholtz coils of the e/m apparatus have a radius and separation of $a = 15$ cm. Each coil has $N = 130$ turns. The magnetic field (B) produced by the coils is proportional

to the current through the coils (I_{hc}) times $7.80 \cdot 10^{-4}$ Tesla/Ampere [$B(\text{tesla}) = (7.80 \cdot 10^{-4})I_{hc}$]. A mirrored scale is attached to the back of the rear Helmholtz coil. It is illuminated automatically when the heater of the electron gun is powered. By lining the electron beam up with its image in the mirrored scale, you can measure the radius of the beam path without parallax error. The cloth hood can be placed over the top of the e/m apparatus so the experiment can be performed in a lighted room.

Pasco High Voltage Power Supply

The Pasco High Voltage Power Supply in Fig. 1.3 provides up to 500 V DC accelerating voltage to the electrodes in the e/m tube, which is measured on the voltmeter shown in Fig. 1.4. The electron gun heater is also powered by this supply using the right panel, which should be set to a maximum of 6 V AC using the dial on the supply.

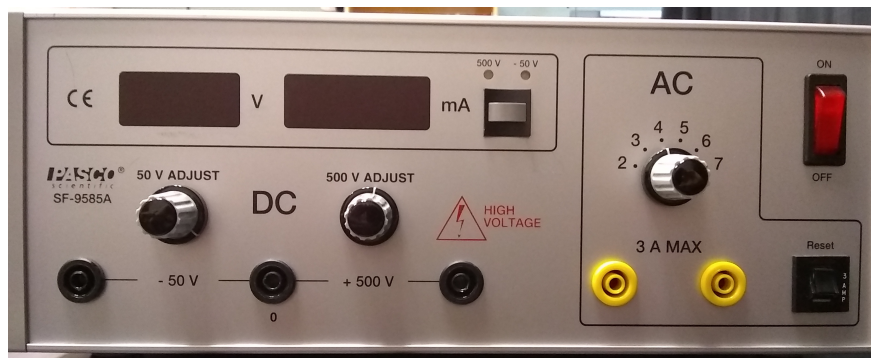


Figure 1.3: Pasco High Voltage Power Supply.

Safety

You will be working with high voltage. Make all connections when power is off. Turn power off before changing/removing connections. Make sure that there are no loose or open contacts.

Set up

The wiring diagram for the apparatus is shown in Fig. 1.4. **Important: Do not turn any equipment until an instructor has checked your wiring.**

Acceptable power supplies settings:

Electron Gun/filament Heater 6 V AC. Do not go to 7V!

Electrodes 150 to 300 V DC

Helmholtz Coils 6 – 9 V DC.

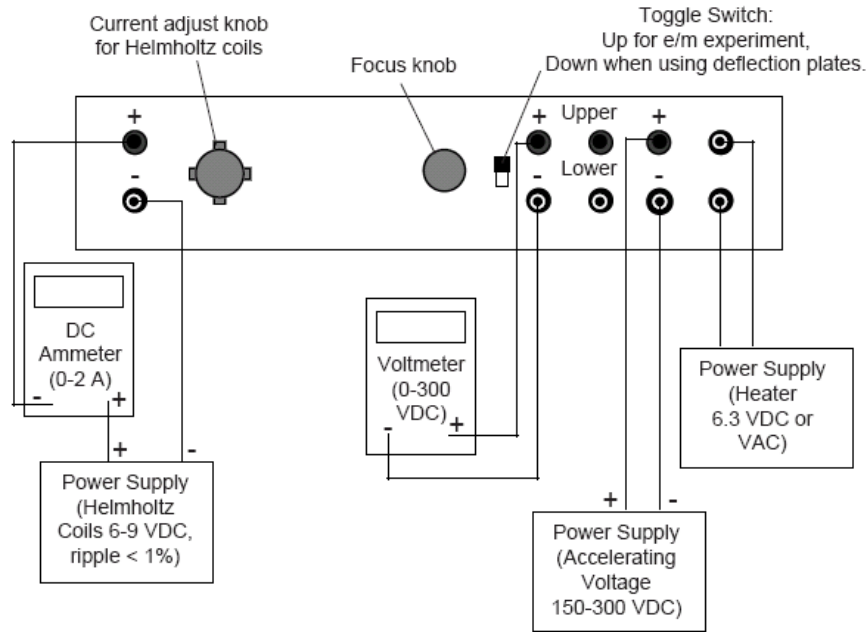


Figure 1.4: Connections for e/m Experiment.

Warning: The voltage for a filament heater should **never** exceed 6.3 VAC. Higher values can burn out filament.

The Helmholtz current should NOT exceed 2 amps. To avoid accidental overshoot run the power supply at a “low” setting in a *constant current* mode and ask the TA or instructor how to set the current limit properly.

Data acquisition

1. Slowly turn the current adjust knob for the Helmholtz coils clockwise. Watch the ammeter and take care that the current is less than 2 A.
2. Wait several minutes for the cathode to heat up. When it does, you will see the electron beam emerge from the electron gun. Its trajectory will be curved by the magnetic field.
3. Rotate the tube slightly if you see any spiraling of the beam. Check that the electron beam is parallel to the Helmholtz coils. If it is not, turn the tube until it is. Don't take it out of its socket. As you rotate the tube, the socket will turn.
4. Measurement procedure for the radius of the electron beam r :
For each measurement record:

Accelerating voltage V_a

Current through the Helmholtz coils I_{hc}

Look through the tube at the electron beam. To avoid parallax errors, move your head to align one side of the electron beam ring with its reflection that you can see on the mirrored scale. Measure the radius of the beam as you see it, then repeat the measurement on the other side, then average the results. Each lab partner should repeat this measurement, and estimate the uncertainty. Do this silently and tabulate results. After each set of measurements (e.g., many values of I_{hc} at one value of V_a) compare your results. This sort of procedure helps reduce group-think, can get at some sources of systematic errors, and is a way of implementing experimental skepticism.

5. Repeat the radius measurements for at least 4 values of V_a and for each V_a for 5-6 different values of the magnetic field.

Improving measurement accuracy

1. The greatest source of error in this experiment is the velocity of the electrons. First, the non-uniformity of the accelerating field caused by the hole in the anode causes the velocity of the electrons to be slightly less than their theoretical value. Second, collisions with the helium atoms in the tube further rob the electrons of their velocity. Since the equation for e/m is proportional to $1/r^2$, and r is proportional to v , experimental values for e/m will be greatly affected by these two effects.
2. To minimize the error due to this lost electron velocity, measure radius to the outside of the beam path.
3. To minimize the relative effect of collisions, keep the accelerating voltage as high as possible. (Above 250 V for best results.) Note, however, that if the voltage is too high, the radius measurement will be distorted by the curvature of the glass at the edge of the tube. Our best results were made with radii of less than 5 cm.
4. Your experimental values will be higher than theoretical, due to the fact that both major sources of error cause the radius to be measured as smaller than it should be.

Calculations and Analysis:

1. Calculate e/m for each of the readings using Eq. 1.5 and determine the uncertainty on e/m based on your uncertainty estimates for those readings. NOTE: Use MKS units for calculations.
2. For each of the four V_a settings calculate the mean $\langle e/m \rangle$ and the standard deviation σ . Are these means consistent with one another sufficiently that you can combine them? [Put quantitatively, are they within 2σ of each other?]
3. Finally, plot the data in the following way which should, (according to Eq. 1.5), reveal a linear relationship: plot V_a on the abscissa [x-axis] versus $r^2 B^2/2$ on the ordinate [y-axis]. The uncertainty in $r^2 B^2/2$ should come from the standard deviation of the

different measurements made by your group at the fixed V_a . The optimal slope of this configuration of data should be $\langle m/e \rangle$. Determine the slope from your plot and its error by doing a linear fit, and compare the slope parameter to the accepted value for $\langle m/e \rangle$. What is the value of the intercept? What should you expect it to be?

4. Comment on which procedure gives a better value of $\langle e/m \rangle$ (averaging or linear plot).

Appendix: Helmholtz coils

The term Helmholtz coils refers to a device for producing a region of nearly uniform magnetic field. It is named in honor of the German physicist Hermann von Helmholtz. A Helmholtz pair consists of two identical coils with electrical current running in the same direction that are placed symmetrically along a common axis, and separated by a distance equal to the radius of the coil a . The magnetic field in the central region may be calculated using the Biot-Savart law:

$$B_0 = \frac{\mu_0 I a^2}{(a^2 + (a/2)^2)^{3/2}}, \quad (1.6)$$

where μ_0 is the magnetic permeability constant, I is the total electric current in each coil, a is the radius of the coils, and the separation between the coils is equal to a .

This configuration provides very uniform magnetic field along the common axis of the pair, as shown in Fig. 1.5. The correction to the constant value given by Eq.(1.6) is proportional to $(x/a)^4$ where x is the distance from the center of the pair. However, this is true only in the case of precise alignment of the pair: the coils must be parallel to each other!

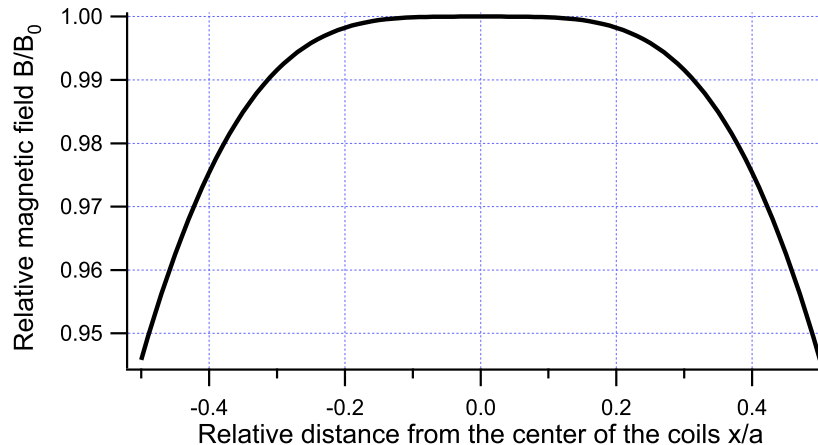


Figure 1.5: Dependence of the magnetic field produced by a Helmholtz coil pair B of the distance from the center (on-axis) x/a . The magnetic field is normalized to the value B_0 in the center.