

Chapter 1

Photoelectric Effect

Experiment objectives: measure the ratio of Planck's constant to the electron charge h/e using the photoelectric effect.

History

The photoelectric effect and its understanding was an important step in development of quantum mechanics. You probably know that Max Planck was the first to postulate that light was made up of discrete packages of energy. At that time it was a proposed hypothetical light property that allowed for the proper description of black body radiation. Several years after Planck made this suggestion, Albert Einstein refined the idea to explain the strange features of electrons which are emitted from metal surfaces after absorbing energy from light. Later he received a Nobel prize for this work.

Theory

Consider an apparatus as outlined in Figure 1.1 (it is the apparatus which Heinrich Hertz used to inadvertently discover the “photoelectric effect”). Light of a frequency ν strikes a cathode, causing electrons to be emitted with velocity v . A positive voltage applied between the anode and the cathode can accelerate emitted electrons towards the positive anode, producing an electrical current in the circuit. A reverse bias potential applied between the anode and cathode will slow down the electrons, and even stop them from reaching the anode by matching their kinetic energy. This is the way to carefully measure the kinetic energies of the photo electrons.

$$KE_{max} = \left(\frac{1}{2}mv^2\right)_{max} = eV_0 \quad (1.1)$$

where KE_{max} is the maximum kinetic energy, m and e are the mass and the charge of an electron, and V_0 is a potential required to stop the electrons (known as the stopping potential).

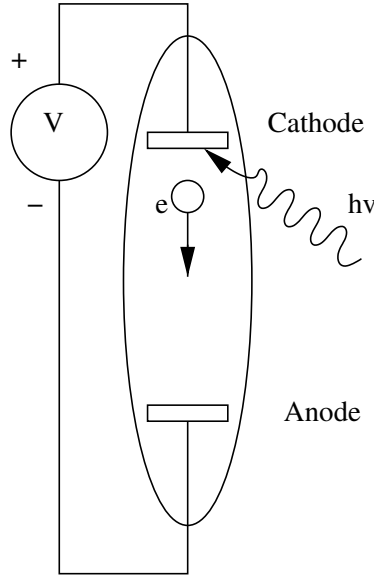


Figure 1.1: A simplified schematic of the photo-electric apparatus.

From the point of view of a wave theory of light, the energy carried by the light wave is proportional to its intensity, and independent of light frequency. Thus, it was logical to expect that stronger light should increase the energy of photoelectrons. However, the experiments of Philipp Lenard in 1900 showed something different: although the maximum current increased with light intensity, the stopping potential V_0 was independent of light intensity. This meant that increasing the rate of energy falling onto the cathode does not increase the maximum energy of the electrons. This was quite a surprising result from the classical point of view.

This “controversy” was elegantly resolved five years later by Albert Einstein, who postulated that light arrived in discrete quanta known as “photons”, and each photon led to an emission of a single electron. The energy of each photon is determined by the frequency of light - $h\nu$. Thus the energy of an emitted photoelectron (and therefore the value of the stopping potential V_0) is determined by the frequency of an individual incident photon:

$$eV_0 = \frac{1}{2}mv^2 = h\nu - \phi = \frac{hc}{\lambda} - \phi \quad (1.2)$$

where ϕ is known as the “work function” - the amount of energy needed to free the electron from the cathode. The value of the work energy is a property of the cathode material. Also, it is now clear why the intensity of light does not affect the stopping potential: more intense light has higher photon flux and thus increase the number of emitted photoelectrons, but the energy of each electron is determined only on the energy of a single photon, and that depends only by light frequency ν .

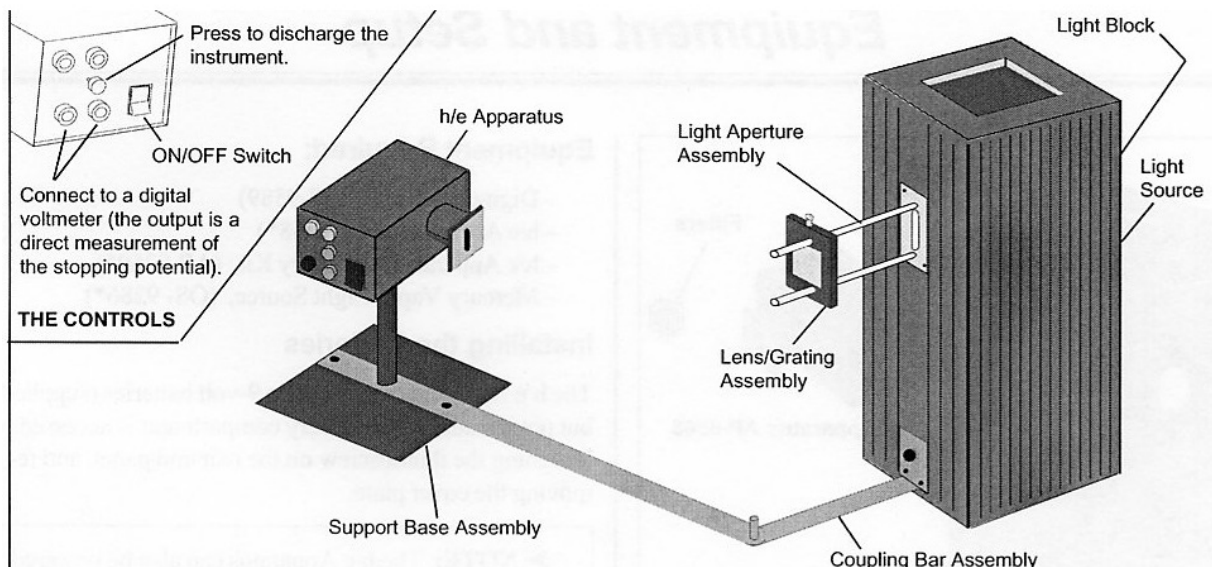


Figure 1.2: The Pasco photoelectric effect setup.

Where do all those electrons come from?

At Jefferson Lab in nearby Newport News, high-energy electrons (GeV range) are aimed at targets to probe the fundamental properties of quarks. But where do all those electrons come from? From the photoelectric effect, of course! A laser beam is aimed at a cathode consisting of a material like copper or GaAs. The frequency of the laser is such that electrons will be emitted from the cathode. In this way, high current electron beams are produced. One benefit of using a laser and the photoelectric effect is that if the laser is "pulsed" in time, the electron beam will be also (this allows synchronized timing in the experiments). Also, the polarization of the laser can be manipulated to allow for the emission of electrons with particular spin. See: www.jlab.org

Procedure

Equipment needed: Pasco photo-electric apparatus, Hg lamp, digital voltmeter. The Pasco apparatus contains a circuit which automatically determines the stopping potential, which you measure off of a voltmeter, so there is no need to adjust the stopping potential yourself or measuring the current (lucky you!). Read the brief description of its operation in the appendix.

Set up the equipment as shown in Fig. 1.2. First, place a lens/grating assembly in front of the Mercury lamp, and observe a dispersed spectrum on a sheet of paper, as shown in Fig. 1.3. Identify spectral lines in both the first and the second diffraction orders on both sides. Keep in mind that the color "assignment" is fairly relative, and make sure you find all lines mentioned in the table in Fig. 1.3. Often the first/second order lines on one side are brighter than on the other - check your apparatus and determine what orders you will

be using in your experiment.

After that instal the h/e Apparatus and focus the light from the Mercury Vapor Light Source onto the slot in the white reflective mask on the h/e Apparatus. Tilt the Light shield of the Apparatus out of the way to reveal the white photodiode mask inside the Apparatus. Slide the Lens/Grating assembly forward and back on its support rods until you achieve the sharpest image of the aperture centered on the hole in the photodiode mask. Secure the Lens/Grating by tightening the thumbscrew. Align the system by rotating the h/e Apparatus on its support base so that the same color light that falls on the opening of the light screen falls on the widow in the photodiode mask, with no overlap of color from other spectral lines. Return the Light Shield to its closed position.

Check the polarity of the leads from your digital voltmeter (DVM), and connect them to the OUTPUT terminals on the h/e Apparatus.

Experimental procedure

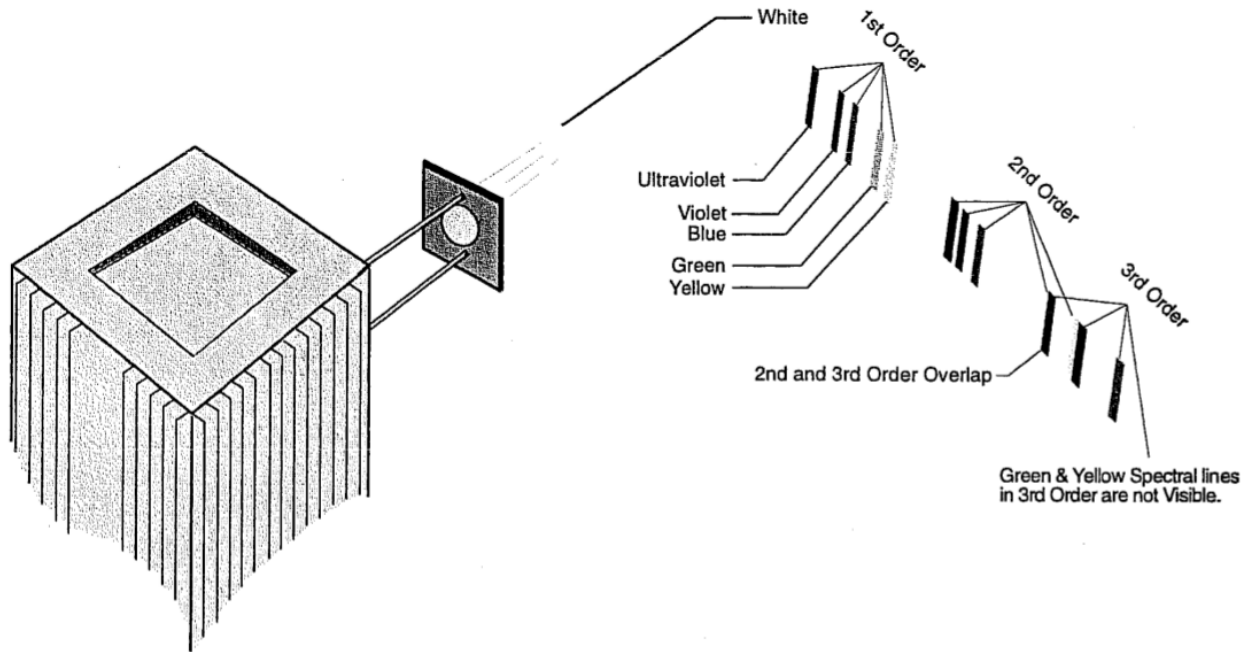
Part A: The dependence of the stopping potential on the intensity of light

1. Adjust the h/e Apparatus so that one of the blue first order spectral lines falls upon the opening of the mask of the photodiode.
2. Press the instrument discharge button, release it, and observe how much time¹ is required to achieve a stable voltage.
3. It's important to check our data early on to make sure we are not off in crazyland. This procedure is technically known as "sanity checking". According to equation Eq. 1.2 the frequency (or, better, wavelength) of light can be found from the measured voltage with knowledge of the work function ϕ . Unfortunately, we don't know the work function. You'll measure it in the second part of the lab.
 - For now switch to violet color and measure the stopping potential for this color.
 - compute hc using ΔV_0 between the two measurements and values of light wavelength for this two cases. Does your data agree with the accepted value? For this computation, it might be helpful to realize that eV_0 is the electron charge times the voltage. If you measured $V_0 = 1$ V then $eV_0 = 1$ "electron-volt" or "eV". This is why electron-volt units are useful. Also, $hc = 1240$ nm eV.
4. Go back to the original spectral line.
5. Place the variable transmission filter in front of the white reflective mask (and over the colored filter, if one is used) so that the light passes through the section marked 100%

¹Use the stopwatch feature of your cell phone? You don't need a precise measurement.

and reaches the photodiode. Record the DVM voltage reading and time to recharge after the discharge button has been pressed and released.

- Do above measurements for all sections of the variable transmission filter. released.



All values except wavelength for yellow line are from *Handbook of Chemistry and Physics, 46th ed.* The wavelength of the yellow was determined experimentally using a 600 line/mm grating.

► **NOTE:** The yellow line is actually a doublet with wavelengths of 578 and 580 nm.

Color	Frequency (Hz)	Wavelength (nm)
Yellow	5.18672E+14	578
Green	5.48996E+14	546.074
Blue	6.87858E+14	435.835
Violet	7.40858E+14	404.656
Ultraviolet	8.20264E+14	365.483

Figure 1.3: The mercury lamp visible diffraction spectrum.

Part B: The dependence of the stopping potential on the frequency of light

- You can easily see five brightest colors in the mercury light spectrum. Adjust the h/e Apparatus so that the 1st order yellow colored band falls upon the opening of the mask of the photodiode. Take a quick measurement with the lights on and no yellow filter and record the DVM voltage. Do the same for the green line and one of the blue ones.

2. Repeat the measurements with the lights out and record them (this will require coordinating with other groups and the instructor). Are the two sets of measurements the same? Form a hypothesis for why or why not.
3. Now, with the lights on, repeat the yellow and green measurements with the yellow and green filters attached to the h/e detector. What do you see now? Can you explain it? (Hint: hold one of the filters close to the diffraction grating and look at the screen).
4. Repeat the process for each color using the second order lines. Be sure to use the the green and yellow filters when you are using the green and yellow spectral lines.

Analysis

Classical vs. Quantum model of light

1. Describe the effect that passing different amounts of the same colored light through the Variable Transmission Filter has on the stopping potential and thus the maximum energy of the photoelectrons, as well as the charging time after pressing the discharge button.
2. Describe the effect that different colors of light had on the stopping potential and thus the maximum energy of the photoelectrons.
3. Defend whether this experiment supports a classical wave or a quantum model of light based on your lab results.

Read the theory of the detector operation in the Appendix, and explain why there is a slight drop in the measured stopping potential as the light intensity is reduced.

NOTE: While the impedance of the unity gain amplifier is very high ($10^{13} \Omega$), it is not infinite and some charge leaks off.

The relationship between Energy, Wavelength and Frequency

1. Use the table in Fig. 1.3 to find the exact frequencies and wavelengths of the spectral lines you used and plot the measured stopping potential values versus light frequency for of measurements of the first and second order lines (can be on same graph).
2. Fit the plots according to $eV_0 = h\nu - \phi$, extracting values for slopes and intercepts. Find average value for slope and its uncertainty. From the slope, determine h counting $e = 1.6 \cdot 10^{-19} \text{ C}$. Do your measured values agree with the accepted value of $h = 2\pi \cdot 10^{-34} \text{ J}\cdot\text{s}$ within experimental uncertainty?

- From the intercepts, find the average value and uncertainty of the work function ϕ . Look up some values of work functions for typical metals. Is it likely that the detector material is a simple metal?

Appendix: Operation principle of the stopping potential detector

The schematics of the apparatus used to measure the stopping potential is shown in Fig. 1.4. Monochromatic light falls on the cathode plate of a vacuum photodiode tube that has a low work function ϕ . Photoelectrons ejected from the cathode collect on the anode. The photodiode tube and its associated electronics have a small capacitance which becomes charged by the photoelectric current. When the potential on this capacitance reaches the stopping potential of the photoelectrons, the current decreases to zero, and the anode-to-cathode voltage stabilizes. This final voltage between the anode and cathode is therefore the stopping potential of the photoelectrons.

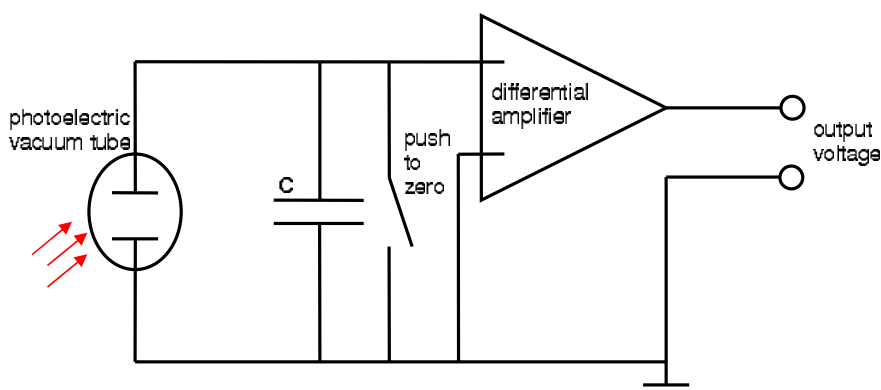


Figure 1.4: The electronic schematic diagram of the h/e apparatus.

To let you measure the stopping potential, the anode is connected to a built-in differential amplifier with an ultrahigh input impedance ($> 10^{13} \Omega$), and the output from this amplifier is connected to the output jacks on the front panel of the apparatus. This high impedance, unity gain ($V_{out}/V_{in} = 1$) amplifier lets you measure the stopping potential with a digital voltmeter.

Due to the ultra high input impedance, once the capacitor has been charged from the photodiode current it takes a long time to discharge this potential through some leakage. Therefore a shorting switch labeled “PUSH TO Zero” enables the user to quickly bleed off the charge.

Sample data tables:

Color	%Transmission	Stopping Potential	Approx. Charge Time
	100		
	80		
	60		
	40		
	20		

Color	%Transmission	Stopping Potential	Approx. Charge Time
	100		
	80		
	60		
	40		
	20		

1st Order Color	λ (nm)	ν ($10^{14}Hz$)	Stopping Potential (V)
Yellow			
Green			
Blue			
Violet			
Ultraviolet			

2nd Order Color	λ (nm)	ν ($10^{14}Hz$)	Stopping Potential (V)
Yellow			
Green			
Blue			
Violet			
Ultraviolet			