

Filters.

Eugeniy E. Mikhailov

The College of William & Mary



Lecture 04

Notes

Power dissipation

Recall that power dissipated by element is

$$P = VI$$

where V and I are real.

Since we use a substitute

$V \cos(\omega t) \rightarrow V e^{j\omega t}$ and $I \cos(\omega t) \rightarrow I e^{j\omega t}$,
we need to write

$$P = \text{Re}(V)\text{Re}(I)$$

Recall the Ohm's law

$$V = ZI$$

Notes

Power dissipation by a reactive element

Theorem

Average power dissipated by a reactive element (C or L) is 0

Lets use as example an inductor.

$$Z_L = i\omega L = e^{i\frac{\pi}{2}}\omega L, I_L = I_p e^{j\omega t}$$

$$V_L = Z_L I_L = e^{i\frac{\pi}{2}}\omega L I_L = \omega L I_p e^{j(\omega t + \frac{\pi}{2})}$$

$$\text{Re}(I_L) = I_p \cos(\omega t), \text{Re}(V_L) = -\omega L I_p \sin(\omega t)$$

Thus average power dissipated by the inductor

$$P = \int_0^T \text{Re}(I_L)\text{Re}(V_L)dt = -\int_0^T I_p \cos(\omega t)\omega L I_p \sin(\omega t)dt$$

$$P = -\omega I_p^2 L \int_0^T \cos(\omega t)\sin(\omega t)dt = \omega I_p^2 L \int_0^T \frac{1}{2} \sin(2\omega t)dt = 0$$

Notes

Fourier transform

If function $f(t)$ goes to zero at $\pm\infty$ then $\hat{f}(\omega)$ exists such as

$$f(t) = \int_{-\infty}^{\infty} \hat{f}(\omega) e^{j\omega t} d\omega$$

Notes

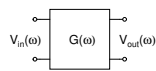
Transfer function

Time domain



$$V_{out}(t) = \int_{-\infty}^t H(t - \tau) V_{in}(\tau) d\tau$$

Frequency domain



$$V_{out}(\omega) = G(\omega) V_{in}(\omega)$$

Where G is complex transfer function or gain.

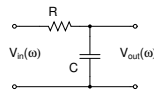
Definition

$$G(\omega) = \frac{V_{out}(\omega)}{V_{in}(\omega)} = |G(\omega)| e^{j\phi(\omega)}$$

Often used values of G in dB

$$dB = 20 \log_{10}(|G(\omega)|)$$

Simple example: RC low-pass filter



$$G(\omega) = \frac{V_{out}(\omega)}{V_{in}(\omega)} = \frac{1}{R + \frac{1}{i\omega C}} = \frac{1}{i\omega RC} \frac{1}{1 + \frac{1}{i\omega RC}} = \frac{1}{1 + i\omega RC}$$

defining $\omega_{3dB} = \frac{1}{RC}$

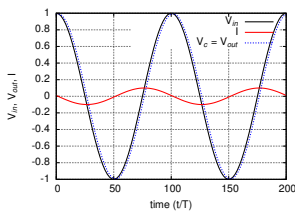
$$G(\omega) = \frac{1}{1 + i\frac{\omega}{\omega_{3dB}}} = \frac{1}{\sqrt{1 + \frac{\omega^2}{\omega_{3dB}^2}}} e^{j\phi}, \phi = \text{atan}\left(-\frac{\omega}{\omega_{3dB}}\right)$$

Note

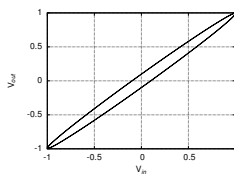
$$|G(\omega = \omega_{3dB})| = 20 \log_{10}\left(\frac{1}{\sqrt{1+1}}\right) = 20 \log_{10}\left(\frac{1}{\sqrt{2}}\right) = -3dB$$

RC low-pass filter at $\omega = .1/RC$

Signal vs time

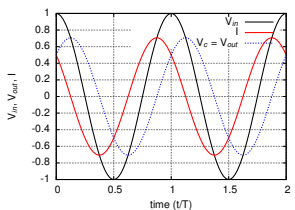


Lissajous plot

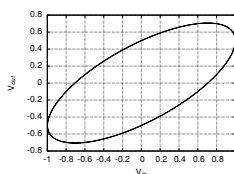


RC low-pass filter at $\omega = 1/RC$

Signal vs time



Lissajous plot



Notes

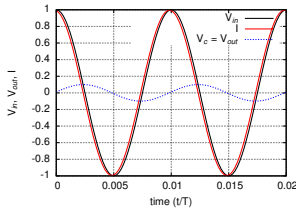
Notes

Notes

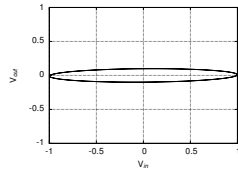
Notes

RC low-pass filter at $\omega = 10/RC$

Signal vs time



Lissajous plot

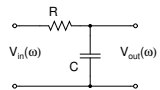


Notes

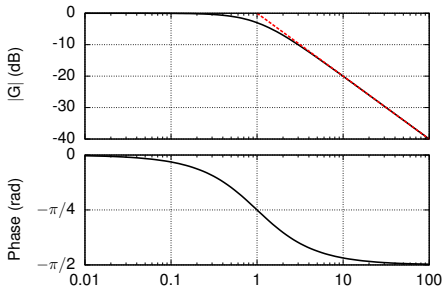
Bode plots

Definition

Bode plot: plots of magnitude and phase of the transfer function, where $|G|$ is often plotted in dB

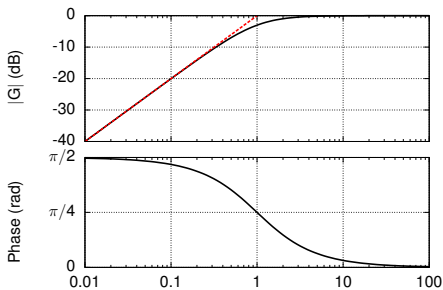
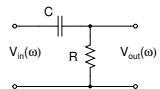


$$G(\omega) = \frac{1}{1 + i\omega\omega_{3dB}}$$



Notes

RC high-pass filter



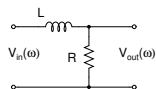
$$G(\omega) = \frac{V_{out}(\omega)}{V_{in}(\omega)} = \frac{R}{R + \frac{1}{i\omega C}} = \frac{i\omega RC}{1 + i\omega RC} = \frac{i\omega\omega_{3dB}}{1 + i\omega\omega_{3dB}}$$

with $\omega_{3dB} = \frac{1}{RC}$

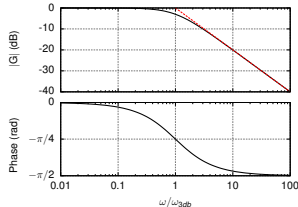
Notes

RL filters

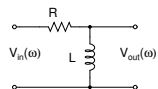
RL low-pass filter



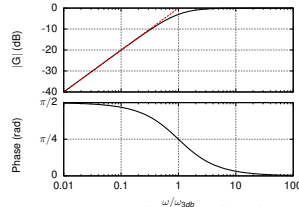
$$G(\omega) = \frac{R}{R + i\omega L}, \omega_{3dB} = \frac{R}{L}$$



RL high-pass filter

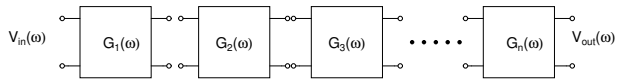


$$G(\omega) = \frac{i\omega L}{R + i\omega L}$$



Notes

Filters chain

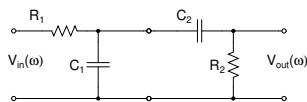


Technically next stage loads the previous and it is quite hard to calculate total transfer function.
However if we use rule of 10 to avoid overloading the previous filter.
Every next stage resistor $R_{i+1} > 10R_i$ we can approximate

$$G_T(\omega) \approx G_1(\omega)G_2(\omega)G_3(\omega) \cdot \dots \cdot G_n(\omega)$$

Notes

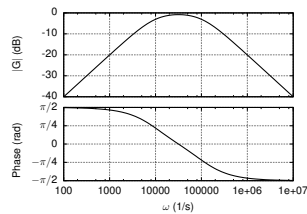
Example band pass filter



$$G_T(\omega) \approx G_1(\omega)G_2(\omega)$$

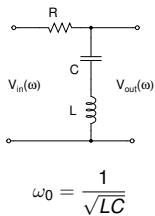
$$G_T(\omega) \approx \frac{1}{1 + j\frac{\omega}{\omega_{13dB}}} \frac{j\frac{\omega}{\omega_{23dB}}}{1 + j\frac{\omega}{\omega_{23dB}}}$$

For $R_1 = 1k\Omega$, $R_2 = 100k\Omega$,
 $C_1 = C_2 = .01\mu F$

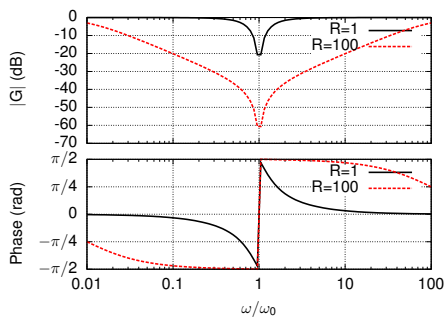


Notes

Notch filter - Band stop filter



$$\omega_0 = \frac{1}{\sqrt{LC}}$$



It is impossible to make band stop filter with $G \approx 1$ outside of stop band with only simple combinations of low and high-pass filters. R, L, and C combo is required or a complicated network of R-C, R-L elements.

Notes

Notes
